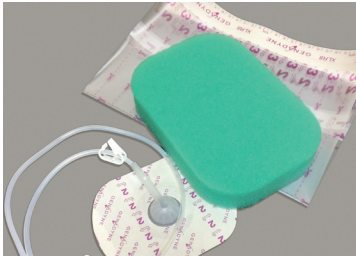




Application Guide

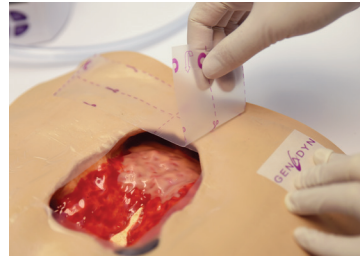
XLR8/XLR8 Plus

GENADYNE



Step 1

Select appropriate size dressing kit for wound. Kit contains foam, port pad, and 2 drapes. (Small kit has 1 drape only.)



Step 2

Clean the wound according to protocol. Protect wound edges with drape.



Step 3

Cut foam to fit accurately in wound bed. Avoid overlapping onto intact skin. Avoid cutting foam over wound. Avoid over-packing, as this will inhibit filtration of drainage.



Step 4

Cover foam with drape by separating bottom layers 1 and 2 to expose the adhesive drape. Position and place drape over foam. Remove stabilization layers 1 and 2, then top with layer 3. Remove white ruler tab.



Step 5

Cut a hole in drape the approximate size of a quarter. Remove paper backing 1 from bottom of the port pad. Position port pad opening over the hole that was created. Remove backing 2 from the top of port pad. Flip handler tabs over on each side and peel down to remove.




Step 6

Select canister size and attach to the back of the pump. Connect the port pad to the canister by securing the purple luer lock.



Step 7

Initiate therapy by pressing the universal on/off button . Adjust pressure as prescribed using the up/down arrows.



Step 8

A secure seal is identified when the foam draws down and the target pressure is reached.

For inquiries please call 877-790-5994
or email at order@MasVidaHealth.com.

MVC - Genadyne - XLR8/XLR8 Plus - Application Guide - 031223

All trademarks, service marks, and company names are the property of their respective owners. Any products or services offered by MasVida Health Care Solutions, LLC (MasVida) are subject to customer entering into a written customer agreement with MasVida. MasVida is a preferred post-acute distributor of Altra™.

 MasVidaHealth™
CARE SOLUTIONS