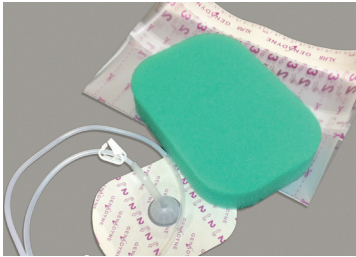




Application Guide

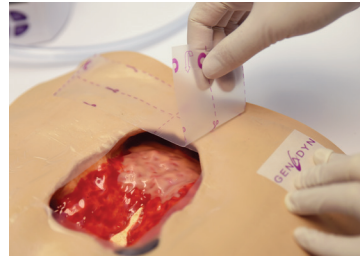
XLR8/XLR8 Plus

GENADYNE



Step 1

Select appropriate size dressing kit for wound. Kit contains foam, port pad, and 2 drapes. (Small kit has 1 drape only.)



Step 2

Clean the wound according to protocol. Protect wound edges with drape.



Step 3

Cut foam to fit accurately in wound bed. Avoid overlapping onto intact skin. Avoid cutting foam over wound. Avoid over-packing, as this will inhibit filtration of drainage.



Step 4

Cover foam with drape by separating bottom layers 1 and 2 to expose the adhesive drape. Position and place drape over foam. Remove stabilization layers 1 and 2, then top with layer 3. Remove white ruler tab.



Step 5

Cut a hole in drape the approximate size of a quarter. Remove paper backing 1 from bottom of the port pad. Position port pad opening over the hole that was created. Remove backing 2 from the top of port pad. Flip handler tabs over on each side and peel down to remove.




Step 6

Select canister size and attach to the back of the pump. Connect the port pad to the canister by securing the purple luer lock.



Step 7

Initiate therapy by pressing the universal on/off button . Adjust pressure as prescribed using the up/down arrows.



Step 8

A secure seal is identified when the foam draws down and the target pressure is reached.

For inquiries please call 877-790-5994
or email at order@MasVidaHealth.com.

Restorix - Genadyne - XLR8/XLR8 Plus - Application Guide - 011923
All trademarks, service marks and company names are the property of their respective owners.

 RestorixHealth®
Excellence in Wound Care

 MasVidaHealth™
CARE SOLUTIONS